



SERVICE INSTRUCTION

Introduction of new floats (pair) for ROTAX® Engine Type 912 and 914 (Series)

ATA System: 73-00-00 Fuel system

1) Planning information

To obtain satisfactory results, procedures specified in this publication must be accomplished with accepted methods in accordance with prevailing legal regulations.

BRP-Rotax GmbH & Co KG cannot accept any responsibility for the quality of work performed in accomplishing the requirements of this publication.

1.1) Applicability

All versions of ROTAX® engine types:

Engine type	Serial number
912 (Series)	all
914 (Series)	all

1.2) Concurrent ASB/SB/SI and SL

In addition to this Service Instruction the following Alert Service Bulletin, Service Bulletins and Service Instructions must be observed and complied with:

- Alert Service Bulletin-ASB-912-069/ASB-914-051, "Exchange of floats on ROTAX® engine type 912 and 914 (Series)", current issue.
- Alert Service Bulletin-ASB-912-069UL/ASB-914-051UL, "Exchange of floats on ROTAX® engine type 912 and 914 and 2-stroke (Series)", current issue.
- Service Bulletin-SB-912-067/SB-914-048, "Exchange of floats on ROTAX® engine type 912 and 914 (Series)", current issue.
- Service Bulletin-SB-912-067UL/SB-914-048UL, "Exchange of floats on ROTAX® engine type 912 and 914 (Series)", current issue.
- Service Instruction-SI-04-1995, "Floats with a new shape, engine series type 912", current issue.
- Service Instruction-SI-912-021/SI-914-023/SI-2ST-009, "Inspection of carburetors", current issue.

1.3) Reason

In the course of continuous development and standardization, new floats (pair) ROTAX® part number 861188 have been introduced. These new floats (pair) are manufactured with a higher compaction rate and contain a recessed brass guide. See Fig. 1.

1.4) Subject

Introduction of new floats (pair) for ROTAX® engine type 912 and 914 (Series).

1.5) Compliance

None

1.6) Approval

The technical content of this document is approved under the authority of DOA ref. EASA.21J.048.

d06440.fm

SERVICE INSTRUCTION

1.7) Labor time

Estimated labor hours:

Engine installed in the aircraft - - - labor time will depend on airframe installation and therefore no estimate is available from the engine manufacturer.

1.8) Mass data

change of weight - - - none.

moment of inertia - - - unaffected.

1.9) Electrical load data

No change.

1.10) Software modifications

No change.

1.11) References

In addition to this technical information refer to current issue of

- Illustrated Parts Catalog (IPC)
- all relevant Alert Service Bulletins (ASB)
- all relevant Service Bulletins (SB)
- all relevant Service Instructions (SI)
- Maintenance Manual Line (MML)
- Maintenance Manual Heavy (MMH)

NOTE: The status of the Manuals can be determined by checking the table of amendments. The 1st column of this table shows the revision status. Compare this number to that listed on the ROTAX website: www.FLYROTAX.com. Updates and current revisions can be downloaded for free.

1.12) Other Publications affected

None.

1.13) Interchangeability of parts

- All parts are interchangeable

SERVICE INSTRUCTION

2) Material Information

2.1) Material- cost and availability

Price and availability will be provided on request by ROTAX® Authorized Distributors or their independent Service Centers.

2.2) Company support information

None.

2.3) Material requirement per engine

parts requirement:

Fig.no.	New p/n	Qty/engine	Description	Old p/n	Application
1	861188	As required	Floats (pair), guided	861185	Engine type 912 and 914 (Series)

2.4) Material requirement per spare part

None.

2.5) Rework of parts

None.

2.6) Special tooling/lubricant-/adhesives-/sealing compound/price and availability

None.

d06440.fm

SERVICE INSTRUCTION

3) Accomplishment/Instructions

- ROTAX® reserves the right to make any amendments to existing documents, which might become necessary due to this standardization, at the time of next revision or issue.

NOTE: Before maintenance, review the entire documentation to make sure you have a complete understanding of the procedure and requirements.

Accomplishment

All measures must be implemented and confirmed by at least one of the following persons or organizations:

- ROTAX® - Authorized Distributors or their independent Service Centers
- Persons with approved qualifications for the corresponding engine types. Only authorized persons (iRMT, Level Heavy Maintenance) are entitled to carry out this work.

NOTE: All work has to be performed in accordance with the relevant Maintenance Manual.

Safety notice



WARNING

Identifies an instruction which, if not followed, may cause serious injury or even fatal injury.



CAUTION

Identifies an instruction which, if not followed, may cause minor or moderate injury.

NOTICE

Identifies an instruction which, if not followed, may severely damage the engine or could void any warranty.

ENVIRONMENTAL NOTE

Environmental notes give you tips on environmental protection.

NOTE: Indicates supplementary information which may be needed to fully complete or understand an instruction.

3.1) Illustrated Parts Catalog-related information

Pay attention to the relevant pages of the latest version of the Illustrated Parts Catalog (IPC) for the respective engine type and/or the section 2.3) Material requirement per engine within this Service Instruction.

3.2) Maintenance (Line)-related information

Pay attention to the specifications of the latest version of the Maintenance Manual Line (MML) for the respective engine type.

NOTICE

As per Maintenance Manual Line (MML) let the floats dry for 1-2 minutes. Only weigh dry floats. Due to their higher compaction rate, the dry weight of the new floats (pair) part no. 861188 may be higher than the previous floats. But in no case the max. weight (of both floats together) is allowed to exceed 7 grams and so still applies. See relevant Maintenance Manual Line Chapter 12-20-00.

d06440.fm

SERVICE INSTRUCTION

3.3) Installation/Maintenance (Heavy)-related information

Pay attention to the specifications of the latest version of the Maintenance Manual Heavy (MMH) for the respective engine type, chapter 73-00-00 section (Fuel system).

NOTE: Carburetor floats must be replaced as a pair.

3.4) Summary

These instructions (section 3) have to be followed in accordance with the deadlines specified in section 1.5.

! A revision bar outside of the page margin indicates a change to text or graphic.

Translation into other languages might be performed in the course of language localization but does not lie within ROTAX® scope of responsibility.

In any case the original text in English language and the metric units are authoritative.

3.5) Enquiries

Enquiries regarding this Service Instruction should be sent to the ROTAX® Authorized Distributor of your area.

A list of all ROTAX® Authorized Distributors or their independent Service Centers is provided on www.FLYROTAX.com.

SERVICE INSTRUCTION

4) Appendix

The following drawings should convey additional information:

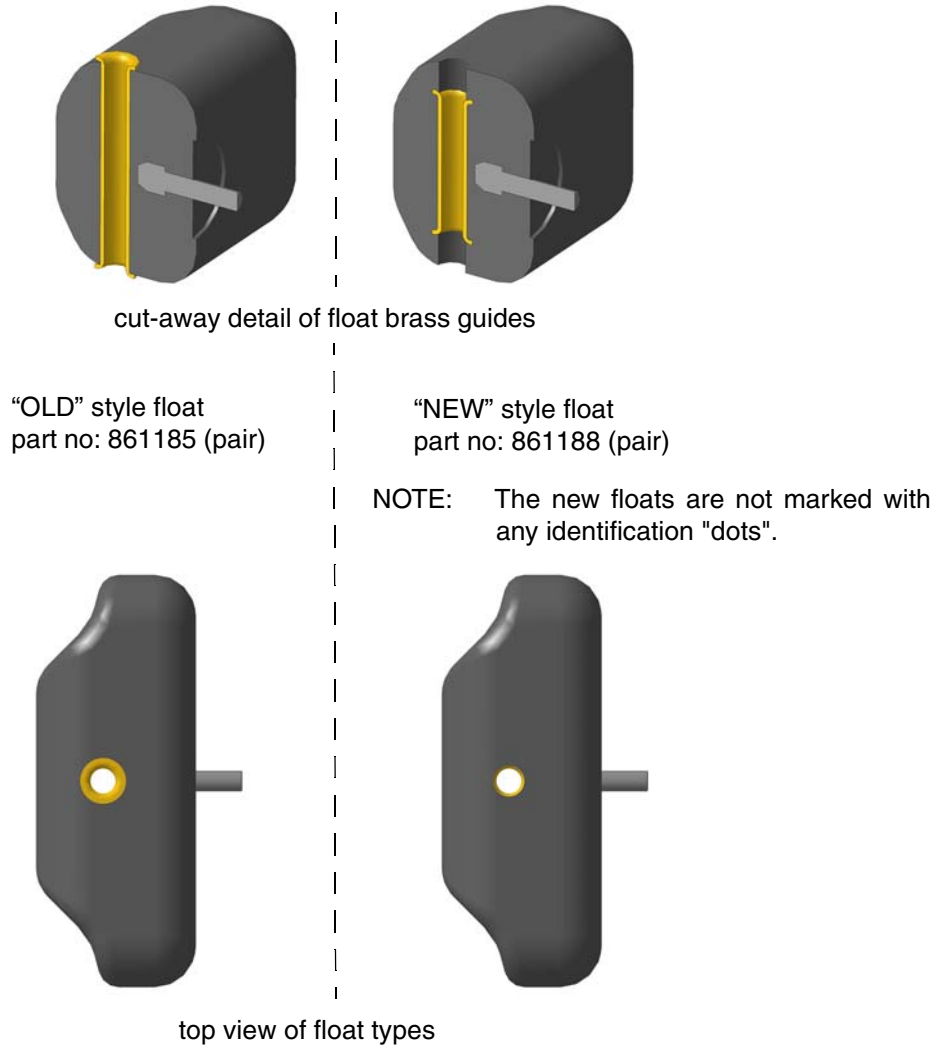


Fig. 1
Comparison of floats

10268,10269

NOTE: The illustrations in this document show the typical construction. They may not represent full detail or the exact shape of the parts which have the same or similar function.

Exploded views are **not technical drawings** and are for reference only. For specific detail, refer to the current documents of the respective engine type.

d06440.fm